



ATCCO STEEL

شركة أبراج العرب للمقاولات
ARAB TOWERS CONTRACTING CO

■ | Strength ■ | Precision ■ | Reliability



WHO WE ARE

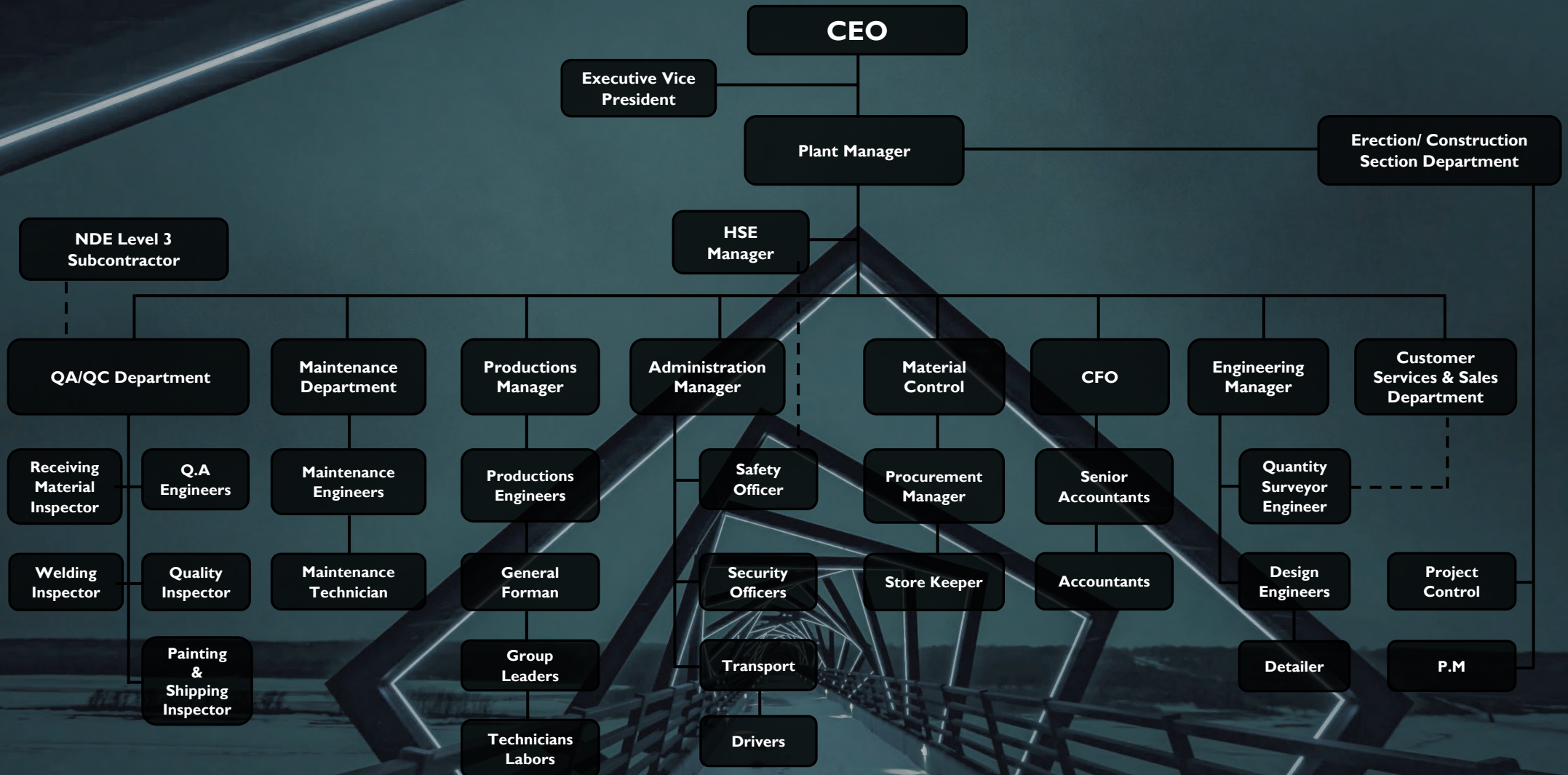
INTRODUCTION

Arab Towers Contracting Company (ATCCO) is a leading construction company serving the Jordanian Market and the Region. ATCCO was incorporated in 2007 with roots back to 1988 known as Hisham Wadi Contracting Establishment. ATCCO-STEEL division started initially in 1999 as part of Hisham Wadi Contracting Establishment, to support the project requirements of steel structure, fabrication, and machining services, at the time.

ATCCO-STEEL aims to remain as one of the largest and most diversified structural steel fabricators in the area, with its 30,000m² covered plant area, built over a 120,000m² plot, located at an active industrial area in Al-Mafraq, Jordan. The facility is equipped with the latest manufacturing and steel fabrication technology and equipment.



ORGANIZATIONAL CHART





ATCCO - STEEL





ATCCO



STRENGTH RELIABILITY PRECISION

ATCCO's growth and success, are achieved through innovation, improvement, devotion to safety, quality, flexible management practice and highly skilled and motivated staff; all devoted to serve the construction industry and our client's requirements while meeting the highest industry standards.

The company's experience and resources, acquired over the years, cover the full spectrum of construction works, spanning from heavy civil construction projects, such as paper-mill factories, steel-mill factories, water treatment plants, sewage treatment plants and industrial plants, to various electromechanical and steel projects.

Since modern equipment play an essential role in enhancing the capability of any contracting company, a wide range of modern equipment and instruments, were acquired by the company to assure highest performance, quality and competitiveness.





STRENGTH RELIABILITY PRECISION

Mission

ATCCO-STEEL is committed to provide customers with efficient, high quality and competitive services and products in a timely manner, while maintaining highest levels of safety.

Vision

ATCCO-STEEL aims to achieve the highest levels of productivity, profitability and safety, through the application of modern equipment, automated systems, best standards, QA/QC Systems and staff development and training.







STRENGTH RELIABILITY PRECISION

QA / QC and Engineering Standards

Our QA/QC system will ensure that customer requirements are recognized and met.

We believe in the importance of having proper documentation for every production step and we are committed to the implementation and maintenance of an efficient quality system. In addition, we encourage suggestions, updates, and improvements as needed.







STRENGTH RELIABILITY PRECISION

ATCCO-STEEL applies, in every fabrication process, the latest international codes of practice, such as:

- AISC: American Institute of Steel Construction
- AISI: American Iron & Steel Institute
- AASHTO: American Association of State Highway and Transportation Officials
- AWS: American Welding Society
- ASME: American Society of Mechanical Engineers
- ASTM: American Society for Testing and Materials
- SSPC: The Society for Protective Coatings
- ASNT: American society for non-destructive test
- ASD: Allowable stress design
- MBMA: Material Building Manufacturer Association
- ISO 12944: Paint & Varnishes-corrosion protection of steel structure by protective paint system
- Jordanian National Building codes - Jordanian code for loads and forces
- EN 10029: Tolerances to EN 10029 for hot rolled plate 3mm and above
- EN 10034: Structural steel I and H sections -- Tolerances on shape and dimensions
- EN 10219-2: Cold formed welded structural hollow sections of non-alloy and fine grain steel part 2. Tolerances, dimensions and sectional properties
- EN 10279: Hot rolled steel channels – tolerances on shape, dimensions, and mass.





STRENGTH RELIABILITY PRECISION

Health and Safety Policy Statement:

ATCCO-STEEL is committed to meet the highest standards of workplace health and safety management, throughout its operations, in order to ensure the safety, health and a hygienic environment for its employees and contractors.

The Health and Safety team is responsible for ensuring the following:

- Equipment and facilities used are maintained in a safe condition, using safe operating procedures.
- Operations are carried out safely, and unnecessary risks are avoided.
- Health and Safety system policies & instructions are clear, visible and understood, by each employee.
- Training sessions are given for every new employee, besides giving refresher courses to experienced ones.
- Health and Safety guidelines and procedures are also imposed on our sub-contractors.
- Employee's performance is evaluated, taking safety as an important parameter in their appraisal.
- Comprehensive and well-established HSE manual are used.
- HSE statistics are maintained.





STRENGTH RELIABILITY PRECISION

We maintain an advanced laboratory, with modern test Equipment, such as:

- Thickness measurement for Plate.
- Visual Test.
- Magnetic Particle Test.
- Penetrant Test.
- Ultrasonic Testing.
- Roughness Test.
- Salt Contamination Test.
- Thickness Measurement Test for Paint (DFT).
- Scratch Test – Peel Off Test-
- Pull Off Test for Paint.
- Holiday Test.
- Pneumatic and Hydro tests.



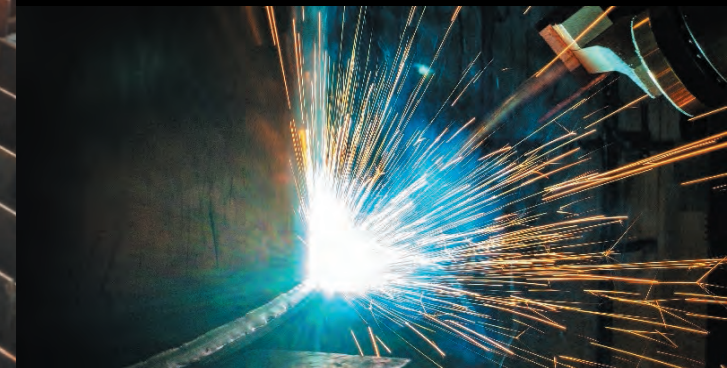




STRENGTH RELIABILITY PRECISION

Equipment Capabilities

ATCCO-STEEL owns and operates plants, that are fully equipped with the latest technology and equipment, using fully automated CNC steel fabrication and production lines, with a production capacity of 1500 tons/month, under a covered area of 30,000m², built-on a 120,000m² plot.



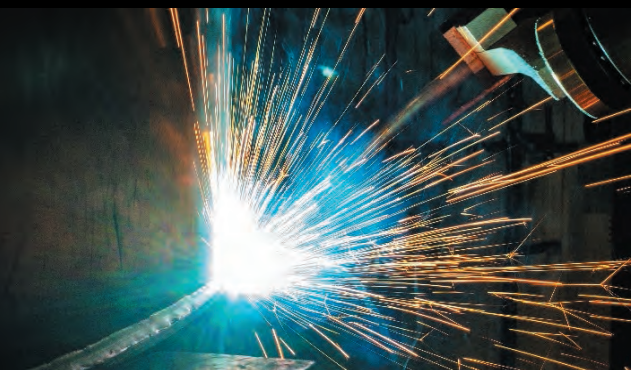




STRENGTH RELIABILITY PRECISION

The main production lines are:

- Bandsawing line (FICEP) –Italy
Drilling line (FICEP) – Italy
- Drilling line VICTORY II (FICEP) - Italy
Plate punching line (FICEP) – Italy
- Two Plate punching lines (FIN-CM)
Two Plate drilling lines (FIN-CM)
- Bandsawing and drilling line
(Kaltenbach) - Germany





COLGAR



STRENGTH RELIABILITY PRECISION

COLGAR - (Italy)

- Hydraulic Guillotine Shear
- Maximum cutting length 6050mm
- Length of knives 6120mm
- Maximum cutting thickness capacity is 18mm for

Steel Grade St 52

NC Hydraulic Guillotine Shear Machine
6500X16mm

NC Hydraulic Guillotine Shear Machine
3200X30mm

NC Hydraulic Guillotine Shear Machine
3000X16mm

NC Hydraulic Guillotine Shear Machine
8000x16mm

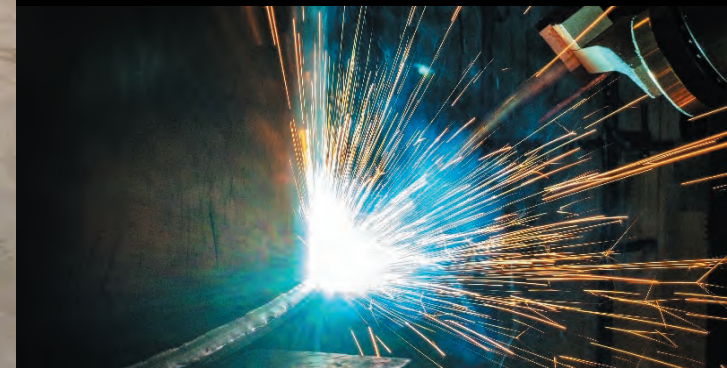






STRENGTH RELIABILITY PRECISION

- Bending machine LVD – Belgium
- Bending machine Baykal-Turkish
- Bending Machine Baykal – Turkish
- Roller machine Germany 1990
- Bending Machine AYW
- CNC Roller Machine (DAVI) – Italy







STRENGTH RELIABILITY PRECISION

- Angle Processing line (FICEP) - Italy
- ESAB Ergostar
- HyperTherm
- Edge beveling milling machine
GIETART – (Holland)
- Shot Blasting machine HPG2020
- Shot Blasting machine DJ156-6
- Sandblasting room for trucks and
trailers and huge structures
- Painting booth for trucks and trailers
and huge structures







STRENGTH RELIABILITY PRECISION

KENTEX – (USA)

- Automatic Submerged Arc welding line for heavy beams.
- A rigid structural bed of 18m length allows to produce single members up to the full bed length.
- Welding Power Units & Controls consist of Lincoln DC 1000 power sources, with Lincoln NA-5 controls, Lincoln NA-5 wire feeders and twin-wire welding.

Welding Manipulator and Self-Aligned Welding Rotators

- Automatic welding manipulator 5x6m.
- Power supply 1000 A.







STRENGTH RELIABILITY PRECISION

- PREMEL BIMA 8-2.0 Machine
- C-Shaped Purlin Machine
- Z-Shaped Purlin Machine
- C & Z Shaped Purlin Machine
- Pre-painted corrugated sheet forming machine
- Metal deck roll forming machine





KONE CRANES

10.0t

COLGAR

FICEP

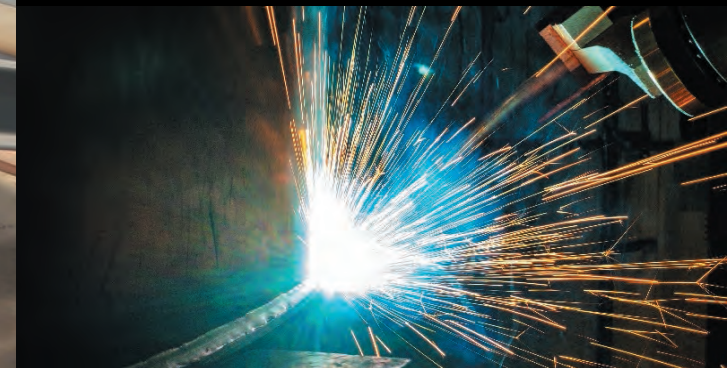
FICEP



STRENGTH RELIABILITY PRECISION

- Kone Cranes 5.0 -10.0 tons
- OMIS Crane 5.0-15.0 tons
- Demag Jib Cranes 2.0 tons

In addition to the above, the factory also has press brakes, fixed radial drills, universal ironworkers, threading and tapping machines, pipe rolling and plate-rolling machines..etc.







STRENGTH RELIABILITY PRECISION

ATCCO-STEEL Trailer Division

started in 2009 to manufacture Tippers and Flatbed Trailers for varied applications.

The production quality manual and QC department follow a high and strict inspection and testing plan for the trailer production process following the design done by qualified engineers and by using professional programs.

Our workshop is equipped with the latest advanced technologies of production machinery most of them are CNC Machines which enable us to manufacture an extensive range of trailers that combine exceptional strength with low unladen weight and excellent stable towing characteristics.

The most modern durable materials are used where applicable such as high tensile built-up steel plates for chassis, Hardox plate for box material, and Durathane paint for coating.



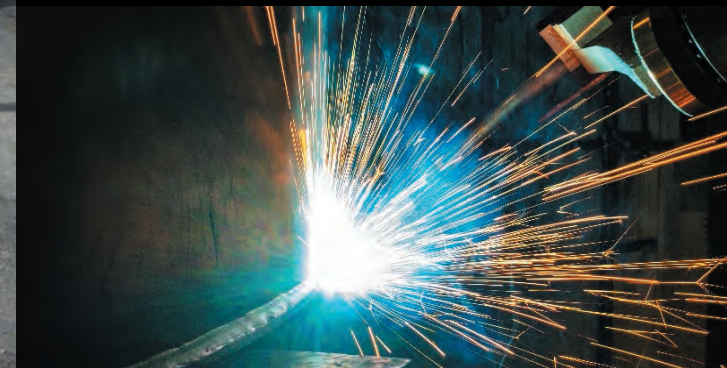
ATCCO.



STRENGTH RELIABILITY PRECISION

Our Product Range

- Flatbed (2-4Axels) with Multi-option Trailers
- Tippers Trailer
- Rescue Trailer
- Water Tanks Trailer
- Low bed Trailer
- Car Carrier
- Trailer Fuel Tanks
- Trailer Cargo
- Body Trailer



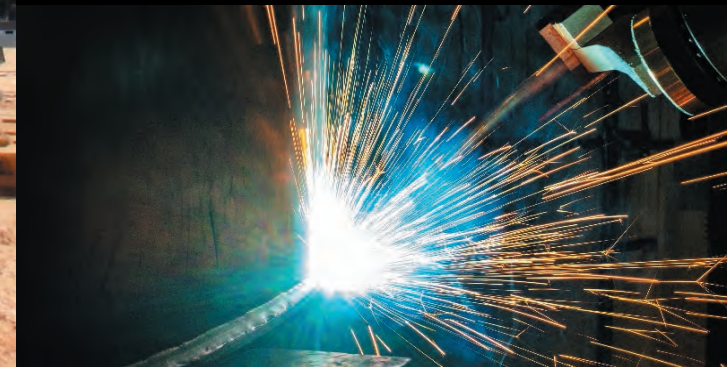




STRENGTH RELIABILITY PRECISION

ATCCO-STEEL has a highly qualified staff of designers, draftsmen, planners, machinists, operators, fabricators, and erectors.

We have the capability to carry out both; turnkey or time and material projects and/or supply material only, including any kind of steel structure projects and pre-engineered buildings.





ATCCO - ST





OUR PROJECTS

OUR PROJECTS IN JORDAN

- Ground Calcium Carbonate (GCC).
- Potash Management New Hangar.
- 1x30 MW Net Coal / Petcoke Based Thermal Power Plant and Coal Shed.
- East Amman Power Station.
- Magnesium Oxide Plant.
- Warehouses for Jordan Bromine Company (2000m²).
- Main Gate for Samara Thermal Power Station.
- Jordan Modern Ready Mix Concrete Company.
- Military Show Parades, Stages, Platforms & Signboards.
- Lamborghini & Skoda Showrooms (Nuqul Group).
- Warehouse for Jomotrade (Alqastal).
- ATCCO-STEEL Factory.
- Block Plant Projects.
- Muqablen Block Plant.
- Marka Block Plant.
- Dead Sea Block Plant.
- Al-Aqaba Block Plant.
- Modern Cement and Mining Company Project.
- Jordan Modern Crushing Plants.
- Halabat Crushing Plant.
- Dead Sea Crushing Plant.
- Gas Stations for Manaseer Group Total No. of 80 Gas Stations in various locations of Jordan.
- Trust for Concrete Industries Company.
- Airport Highway Pedestrian Bridge (72m clear span).
- Jordan Abyad Chemical Complex.
- Jordan Bromine Expansion Project.
- JBC Petra Bromine Project Substation and Warehouses.
- Polystyrene Factory Hangar (3000m²).
- Ayla Stainless-steel Tanks and Carbon-steel Tanks (30m³ to 50m³).
- King Hussein Cancer Center Steel Structure Works and Pedestrian Bridge.
- New C7 Intake Structure and Associated Feed and Tail Brine Lines.
- MET Cranes Steel-structure Main Girders.
- IKEA Navigation Tower, Canopies, and Staircases.
- Al-Moaqar Bonded Warehouse (3000m²).
- Rhodes Carbon Steel Tanks (623m³ and 130m³).
- Qatrana Cement Factory Coal Storage Hangar (6400m²).
- Palletizing Plant (Hangar and Conveyer).
- Arabia Cement Factory.
- Abdali Gateway (Offices, Tower, Brackets, Dwelling Building).
- Abdali Heating and Cooling Plant.
- Al-Tafila Warehouse.
- AL-Quds Canopies for Solar System.
- Al-Fayez Gas Station.







Modern Cement and Mining - MCM



1x30 MW Net Coal Based Thermal Power Plant



Coal Shed for Net Coal Based Thermal Power Plant





Acwa Power Zarqa



East Amman Power Station



Potash Management New Hangar



King Hussein Cancer Center Pedestrian Bridge



Ground Calcium Carbonate (GCC)



Manaseer Crushing Plant



Jordan Abyad Chemical Complex



Manaseer Block Plant



Airport Highway Pedestrian Bridge



LAMBORGHINI AMMAN



LAMBORGHINI AMMAN

Nuqul Automotive



Lamborghini & Skoda Showrooms







Manaseer Gas Station - (Total of 80 Gas Stations)

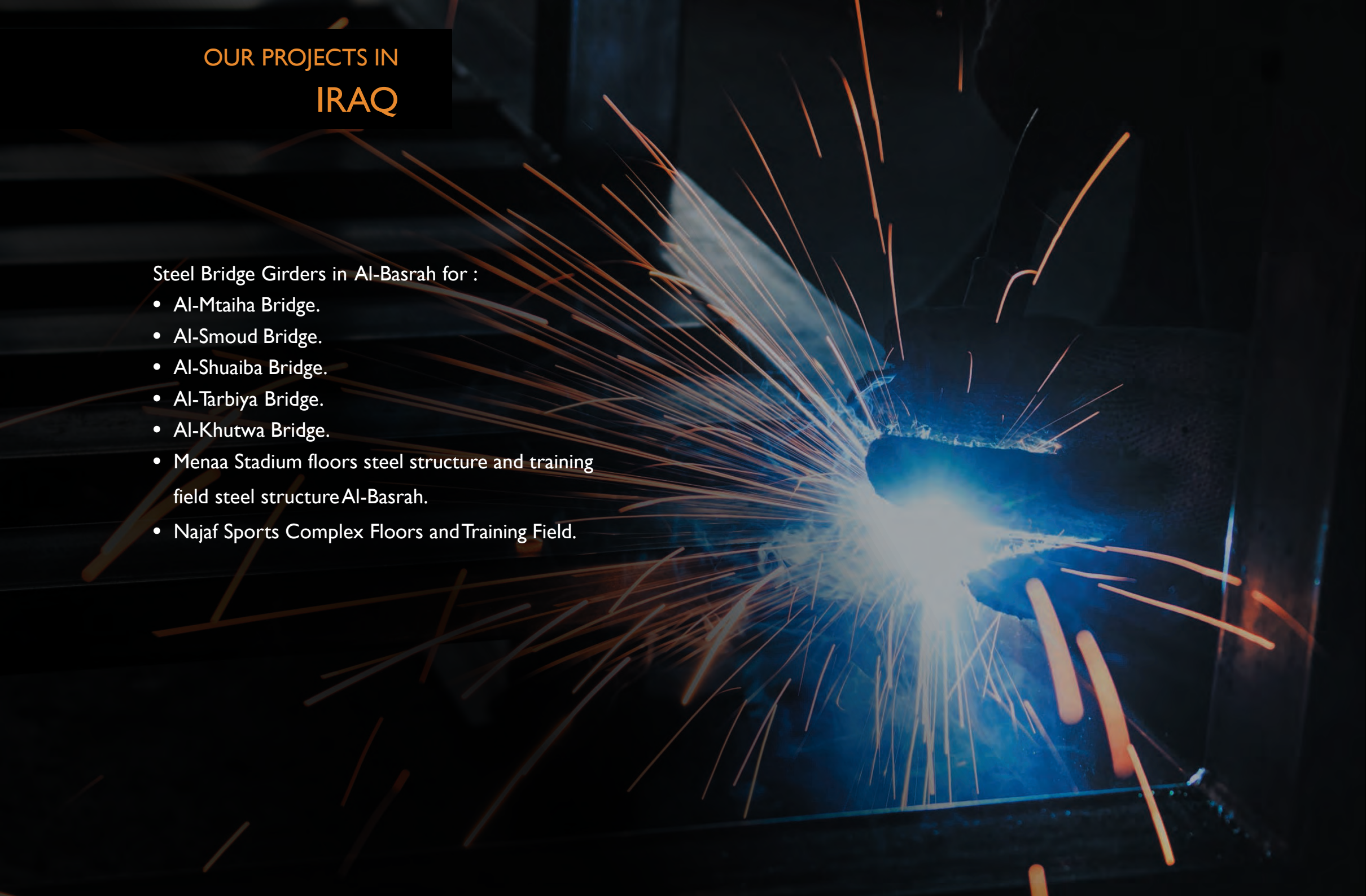


Al-Adyat Trading Machinery Building

OUR PROJECTS IN IRAQ

Steel Bridge Girders in Al-Basrah for :

- Al-Mtaiha Bridge.
- Al-Smoud Bridge.
- Al-Shuaiba Bridge.
- Al-Tarbiya Bridge.
- Al-Khutwa Bridge.
- Mena Stadium floors steel structure and training field steel structure Al-Basrah.
- Najaf Sports Complex Floors and Training Field.

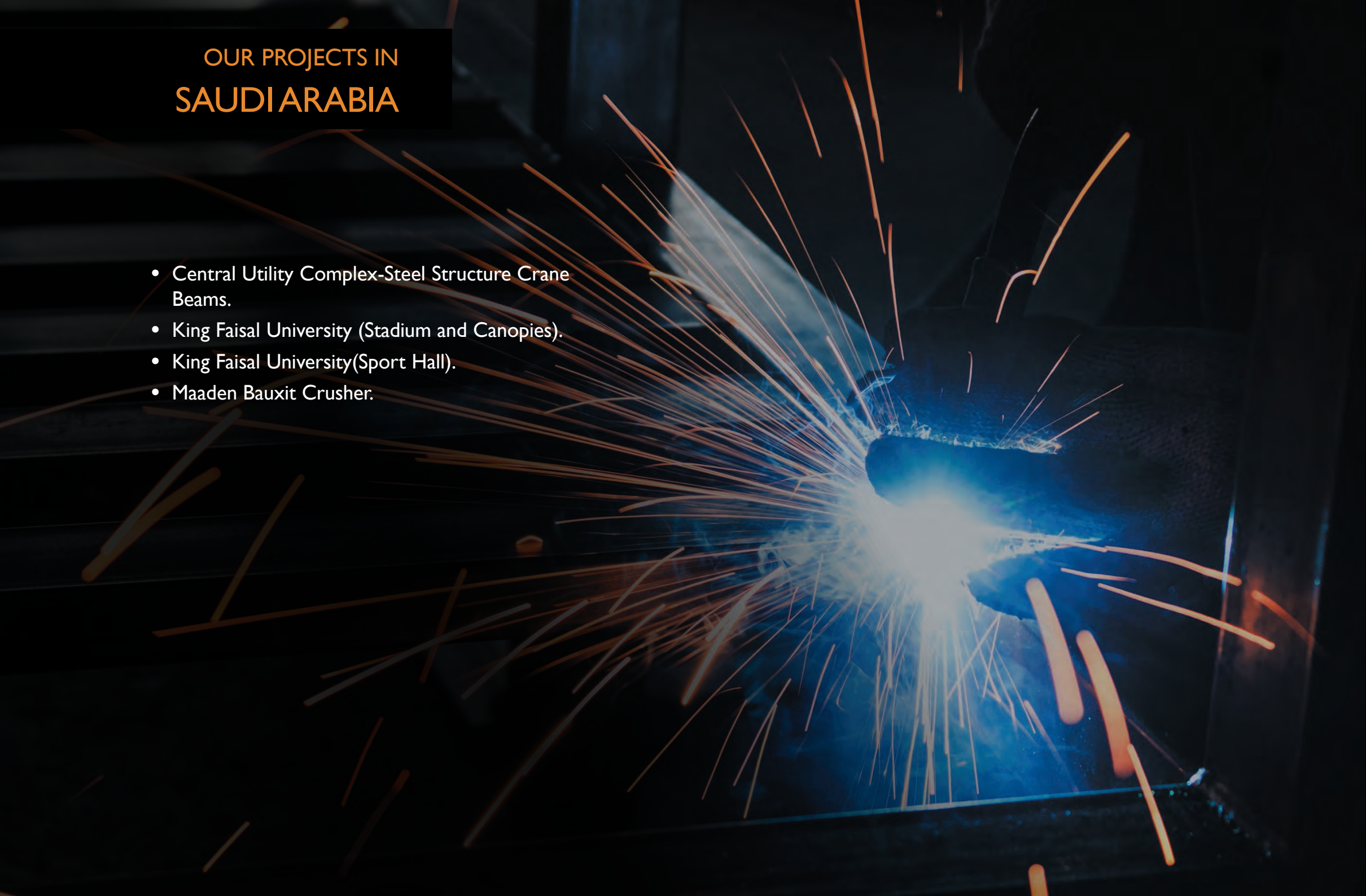




Al-Basrah Bridges - Iraq (1000 Ton)

OUR PROJECTS IN SAUDI ARABIA

- Central Utility Complex-Steel Structure Crane Beams.
- King Faisal University (Stadium and Canopies).
- King Faisal University(Sport Hall).
- Maaden Bauxite Crusher.





King Faisal University Sports Hall - KSA (600 Ton)

CERTIFICATIONS



CERTIFICATIONS

**CERTIFICATE OF AUTHORIZATION**

The named company is authorized by the American Society of Mechanical Engineers (ASME) for the scope of activity shown below in accordance with the applicable rules of the ASME Boiler and Pressure Vessel Code. The use of the ASME Certification Mark and the authority granted by this Certificate of Authorization are subject to the provisions of the agreement set forth in the application. Any construction stamped with the ASME Certification Mark shall have been built strictly in accordance with the provisions of the ASME Boiler and Pressure Vessel Code.

COMPANY:
Arab Towers Contracting Company
ATCCO-STEEL
Al-Mafraq Thagret-Job
11953
Jordan

SCOPE:
Fabrication and assembly of pressure piping at the above location and field sites controlled by the above location

AUTHORIZED: February 25, 2019
EXPIRES: April 15, 2022
CERTIFICATE NUMBER: 53516

David E. Tuttle
Board Chair, Conformity Assessment

Joseph S. ...
Managing Director, Conformity Assessment



The American Society of Mechanical Engineers

**CERTIFICATE OF AUTHORIZATION**

The named company is authorized by the American Society of Mechanical Engineers (ASME) for the scope of activity shown below in accordance with the applicable rules of the ASME Boiler and Pressure Vessel Code. The use of the ASME Certification Mark and the authority granted by this Certificate of Authorization are subject to the provisions of the agreement set forth in the application. Any construction stamped with the ASME Certification Mark shall have been built strictly in accordance with the provisions of the ASME Boiler and Pressure Vessel Code.

COMPANY:
Arab Towers Contracting Company
ATCCO-STEEL
Al-Mafraq Thagret-Job
11953
Jordan

SCOPE:
Manufacture and assembly of power boilers at the above location and field sites controlled by the above location

AUTHORIZED: February 25, 2019
EXPIRES: April 15, 2022
CERTIFICATE NUMBER: 45516

David E. Tuttle
Board Chair, Conformity Assessment

Joseph S. ...
Managing Director, Conformity Assessment



The American Society of Mechanical Engineers

**CERTIFICATE OF AUTHORIZATION**

The named company is authorized by the American Society of Mechanical Engineers (ASME) for the scope of activity shown below in accordance with the applicable rules of the ASME Boiler and Pressure Vessel Code. The use of the ASME Certification Mark and the authority granted by this Certificate of Authorization are subject to the provisions of the agreement set forth in the application. Any construction stamped with the ASME Certification Mark shall have been built strictly in accordance with the provisions of the ASME Boiler and Pressure Vessel Code.

COMPANY:
Arab Towers Contracting Company
ATCCO-STEEL
Al-Mafraq Thagret-Job
11953
Jordan

SCOPE:
Manufacture of pressure vessels at the above location and field sites controlled by the above location (This authorization does not cover impregnated graphite)

AUTHORIZED: February 25, 2019
EXPIRES: April 15, 2022
CERTIFICATE NUMBER: 45517

David E. Tuttle
Board Chair, Conformity Assessment

Joseph S. ...
Managing Director, Conformity Assessment



The American Society of Mechanical Engineers

CERTIFICATIONS





Wasfi Al Tal (Gardens) Street, Building 41
Yathreb Commercial Complex
P.O. Box 593 Amman | 1953 Jordan
Tel:(962 6) 5530381, 5537064
Fax: (962 6) 5533662
info@atcco.com.jo

www.atcco.com.jo